

STRALIS Prime Mover

X-WAY SERIES



STRALIS X-WAY SERIES

OPTIONAL PACKS

	6x4 Prime Mover 460Hp AD (Active Day) AD450X46TZ/P 3900 mm WB	6x4 Prime Mover 460Hp AT (Active Time) AT450X46TZ/P 3900 mm WB	6x4 Prime Mover 510Hp AS (Active Space) AS500X51TZ/P 3900 mm WB
Comfort Pack AD Day Cab			
Cabin air suspension	○	NA	NA
Auto a/c system			
Fabric suspended heated passenger seat			
Comfort Pack AT Sleeper Cab			
Cabin air suspension	NA	○	NA
Auto a/c system			
Fabric suspended heated passenger seat			
Servoassisted cabin tilting			
Fridge			
Safety Pack			
Xenon headlight + Headlamp washers	○	○	○
Tire Pressure Monitoring System (TPMS)			
Additional head/foglights			

○ – Optional NA – Not Available



Xenon headlight + Headlamp washers



Auto a/c system



Stralis X-Way AT Prime Mover interior



Stralis X-Way AS-L Prime Mover interior



Stralis X-Way AT Prime Mover dash

STRALIS X-WAY SERIES

OPTIONAL UPGRADES

	6x4 Prime Mover 460Hp AD (Active Day) AD450X46TZ/P 3900 mm WB	6x4 Prime Mover 460Hp AT (Active Time) AT450X46TZ/P 3900 mm WB	6x4 Prime Mover 510Hp AS (Active Space) AS500X51TZ/P 3900 mm WB
Basic Model Options			
Sleeper cab low roof	Standard	Standard	○
Sleeper cab high Roof	NA	○	Standard
Lane Departure Warning System (LDWS)	○	○	Standard
Engine immobiliser	○	○	Standard
Chassis			
4200 mm WB	NA	NA	○
Fuel Management			
90km/h speed limiter	○	○	○
Roof spoiler (Not available with AT High Roof)	○	○	NA
Full aerodynamic kit	○	○	○
Only Auto transmission mode	○	○	○
No engine idle cut off	Standard	Standard	○
Multimedia			
Iveconnect + Driver Style Evaluation (DSE) + Driver Attention Support (DAS)	○	○	○
Cab Interior			
Maxi fridge + coolbox	NA	NA	○
Parking cooler (Indel B brand), (Not available with AT low roof cab)	NA	○	○
Two bunks soft with net protection (Not available with AS low roof cab)	NA	NA	○
Cab Exterior			
Steel front bumper	○	○	NA
Headlamp protection grid (Not available with plastic bumper)	○	○	NA
Transmission			
Hydraulic retarder	○	○	○
Wheel/Tyre			
Polished alloy wheels	○	○	○
Durabright finish alloy wheels	○	○	○
Spare wheel	○	○	○
295/80 - 11R22.5 tyres (Michelin X Multi Z - X Multi D)	○	○	○
275/70 R22.5 tyres (Dunlop SP350-SP430)	○	○	○
275/70 R22.5 tyres (Michelin X Multi Z - X Multi D)	○	○	○

○ - Optional NA - Not Available



Stralis X-Way sleeper cab interior



Stralis X-Way sleeper cab interior



Stralis X-Way dash



Parking cooler



Steel bumper



Durabright wheels

STRALIS SPECIFICATIONS X-WAY PRIME MOVER

CHASSIS DIMENSIONS (mm)

		6x4 AD C11 460 hp	6x4 AT C11 460 hp	6x4 AS C13 510 hp
A	Wheelbase	3900	3900	3900/4200
B	Overall length	6819	6819	6819/7119
H	Front ground clearance	231	231	231
G	Rear ground clearance	237	237	237
	AF	778	778	778
	Turning circle* (kerb to kerb)	15720	15720	15720/15750

*For wall to wall add 1600 mm

CAB DIMENSIONS (mm)

		Low roof	Low roof	High roof
F	Unladen (6x4)	2990	2990	3795

SUSPENSION (mm)

	IVECO 8 Bag	6x4 AD	6x4 AT	6x4 AS
C		697.5	697.5	697.5
D		697.5	697.5	697.5
E	Unladen	1028	1028	1037

MASS RATINGS

- GVM / GCM 25.0 tonnes / 45.0 tonnes

	6x4 AD	6x4 AT	6x4 AS
Chassis mass front	4.7 tonnes*	4.7 tonnes*	5.1 tonnes*
Chassis mass rear	3.3 tonnes*	3.4 tonnes*	3.3 tonnes*
Chassis mass total	8.0 tonnes*	8.1 tonnes*	8.4 tonnes*

*Weights are to standard configuration and include: chassis cab or prime mover, with no driver or fuel.

ENGINE

460 hp FPT Industrial Cursor 11 (EURO 6 StepC)

510 hp FPT Industrial Cursor 13 (EURO 6 StepC)

Maximum Power:

338 kW (460 hp) @ 1900 rpm

375 kW (510 hp) @ 1900 rpm

Maximum Torque:

2150 Nm (460 hp) @ 925 rpm

2300 Nm (510 hp) @ 900 rpm

Emissions Technology: Hi-SCR (No EGR)

Total Displacement: 11.1 litre (AD/AT 460 hp), 12.9 litre (AS 510 hp)

Exhaust: Horizontal catalytic muffler with integrated Hi-SCR catalyser

TRANSMISSION

12-speed IVECO DirectDrive Automated

Type: HI-TRONIX 12TX2420 TD

- 2-pedal operation with electro-pneumatically shift control

Optional: Hydraulic Retarder

FRONT AXLE & SUSPENSION

IVECO 5890/D

Type: Forged steel I-beam

Capacity: 9.0 tonnes

Suspension Type: 2 leaf parabolic suspension

Capacity: 8.0 tonnes

REAR AXLE & SUSPENSION

Meritor MT23-150/D tandem single reduction

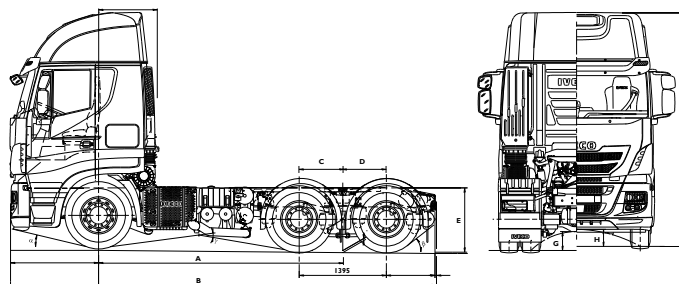
Capacity: 23.0 tonnes

Suspension Type: IVECO 8 bag with ECAS (Electronically Controlled Air Suspension) to control ride height

Differential: Driver controlled differential locks

REAR AXLE RATIO

	6x4 AD	6x4 AT	6x4 AS
Standard/Default	3.09:1	3.09:1	2.83:1
Optional	2.83:1	2.83:1	3.09:1



BRAKES

Type: EBS (Electronic Braking System), AEBS (Automatic Emergency Braking System), BAS (Brake Assistant System), ESP (Electronic Stability Program) ASR (Anti-Slip Regulation) and Hill Holder

Front / Diameter: Ventilated disc brakes / 432 mm

Rear / Diameter: Ventilated disc brakes / 432 mm

- 7 pin electrical trailer connection
- Steel air tanks

FUEL SYSTEM

460 litre rectangular aluminium tank (RHS) and 50 litre AdBlue tank (Cursor 11)

540 litre rectangular aluminium tank (RHS) and 50 litre AdBlue tank (Cursor 13)

CHASSIS

Type: 304 x 80 x 7.7 mm medium tensile steel channel

- Plastic bumper and driving lights, LED rear lights
- FUPS
- Tapered end of frame with fifth wheel mounting angles

ELECTRICAL SYSTEM

Type: 24 Volt

Multiplex computerised CANBUS

Batteries: 2 x 170 Ah with automatic isolation switch (Cursor 11), 2 x 220 Ah with automatic isolation switch (Cursor 13)

Alternator: 28 Volt-90 A

WHEELS & TYRES

Wheels: 8.25DC (drop centre) x 22.5 10-stud 335 mm PCD steel disc

Front Tyres: 295/80 R22.5

Rear Tyres: 11 R22.5

CAB CONSTRUCTION

- 2300 mm wide, all steel cab (AD/AT cab)
- 2500 mm wide, all steel cab (AS cab)

SAFETY FEATURES

- Cruise control
- ACC (Adaptive Cruise Control)
- AEBS (Advanced Emergency Braking System)
- DRL (Daytime Running Lights)
- Extended Catwalk
- Reverse Buzzer
- Remote Central Locking
- Axle load indicator

CAB FEATURES

- Driver seat: fabric covered, with head rest, seat belt, air suspended, heated, and lumbar adjustment. (AD/AT cab)
- Leather driver and passenger high comfort seats (AS cab)
- Passenger seat: fabric covered, with head rest, seat belt and 2-way adjustment. (AD/AT cab)
- Passenger heated and air suspended seat (AS cab)
- Adjustable Steering Column (Pneumatic control)
- 24 V and 12 V sockets
- 90° opening doors with electronically operated windows
- Radio/CD MP3 player with Bluetooth and steering wheel controls
- Storage lockers and compartments above console and floor level
- Electric battery cutout
- Expansion module and PTO provision
- Manual A/C system (STD with AD/AT cab)
- Cooler box (STD with AT cab)
- Fridge (STD with AS cab)
- Cabin air suspension (STD with AS cab)
- Auto A/C system (STD with AS cab)
- Servoassisted cabin tilting (STD with AS cab)



iveco.com.au

IVECO

Your partner for sustainable transport

IVECO TRUCKS AUSTRALIA, LIMITED ABN 86 004 065 061 PRICES HWY DANDENONG VICTORIA 3175 PO BOX 117 DANDENONG VICTORIA 3175 TELEPHONE (03) 9238 2200 WWW.IVECO.COM.AU THE INFORMATION IN THIS DOCUMENT WAS CORRECT AT THE TIME OF PRINTING. ALL WEIGHTS AND DIMENSIONS ARE APPROXIMATE ONLY IF AN EXACT WEIGHT OR DIMENSION IS REQUIRED PLEASE CONTACT YOUR LOCAL AUTHORISED IVECO DEALER ALWAYS CONSULT AN AUTHORISED IVECO DEALER BEFORE DECIDING TO PLACE AN ORDER. OVERSEAS IMAGES ARE SHOWN THROUGHOUT THIS DOCUMENT. IMAGES IN THIS DOCUMENT MAY SHOW EQUIPMENT NOT INCLUDED IN THE STANDARD VEHICLE AND ARE SUBJECT TO AVAILABILITY. WE RESERVE THE RIGHT TO AMEND ANY PART OF THIS DOCUMENT WITHOUT NOTICE. IVECO 1570.09/19